

2020 - 2021

ENNIS COLLEGE OF FURTHER EDUCATION

FULL TIME DAY PROGRAMMES

BUSINESS

ACCOUNTING

NURSING

CHILDCARE



Director's Welcome



This prospectus introduces you to Ennis College of Further Education and the post leaving cert (PLC) programmes offered. If you decide to enrol in our College, you will be taking the first steps on the road to a rewarding education programme and career path.

All of our Further Education Courses are related to the opportunities that are available in the work place while also serving as a basis for further study at third level.

Programmes are accredited by QQI or Accounting Technicians Ireland. Each course provides a progression pathway to third level programmes through the Higher Education Links Scheme. Through this route, learners can access courses that require high CAO points. Information from many third level colleges including UL, Mary Immaculate College, UCC, indicates an increase in the number of reserved places on degree programmes for PLC applicants.

We recently agreed a direct access route to degrees in LIT Ennis. Any graduate with a full award from ECFE can progress to LIT Ennis campus.

Our Accounting Technicians programme at level 6 offers a direct access route to 2nd year of professional accounting studies with institutes of technology. In recent years, our learners have come in the top 5% in their final Accounting Technicians exams.

Innovation is part of who we are at Ennis College of Further Education. We introduced the University Access Programme - General Studies Level 5 to provide an alternative access route to higher education and enable learners to develop key skills for academic research and enquiry.

Our Childcare Levels 5 & 6 programmes were developed in response to the Department of Children and Youth Affairs decision to increase the minimum qualification for all pre-school leaders. We also offer SNA training through our level 5 programme.

Our programmes are delivered by skilled teachers dedicated to helping you to achieve your goals. The college environment encourages all our learners to maximise their potential. Students are facilitated to achieve the best possible results in a caring environment, which aims to develop the academic, vocational and personal skills.

Should you require any information, please check our website, avail of our drop-in information sessions, or contact the college.

Is mise le meas,
Marie O'Callaghan
 Director of Ennis College of Further Education

Programmes Offered

LEVEL 5

Business Studies.....	4
General Studies–University Access.....	5
Office Administration & Medical Secretary.....	6
Nursing Studies.....	9
Community Health Services.....	10
Early Childhood Care & Education including SNA.....	11

LEVEL 6

Early Childhood Care & Education.....	12
Accounting Technician Certificate.....	7
Accounting Technician Diploma.....	8

General Information.....

Progression.....

Direct Access to Degree Programmes.....

Note: All programmes are offered subject to sufficient enrolments and also Department of Education and Skills/Limerick & Clare Education Training Board approvals. Programmes, subjects, schedules, prices etc as outlined in this book may change. E&OE.

ENNIS COLLEGE OF FURTHER EDUCATION

📍 Ennis Community College Campus,
 Harmony Row, Ennis, Co. Clare
 ☎ 065-6829432
 ✉ info@enniscc.ie
 🌐 www.furthereducationennis.com

Why Choose ECFE?

SUCCESS

A number of our past pupils have progressed to their chosen career options through 3rd level and employment. Smaller classes with a dedicated team of tutors helps to keep learners on track to achieve their goals.

ASSESSMENT

Continuous assessment takes place on all QQI programmes. Work done throughout the year, such as projects and assignments, will be graded and contribute towards final assessment. Some components also have an end of year exam.

THE STAFF

The staff at ECFE is highly qualified and dedicated to high academic achievement. The team has several years' experience delivering QQI programmes to the highest national standards. Tutors bring industry and academic expertise to the classroom.

WORK EXPERIENCE

Work experience forms an integral part of all QQI Level 5/6 Awards. Learners are required to seek work experience in an environment that relates specifically to their programme of study. Learners will have a dedicated work experience tutor to support the work experience placement. The college has excellent links with local business and industry.

STUDENT SERVICES INCLUDE:

- Progression links to other colleges and universities
- Group and individual access to our Guidance Counsellor
- IT labs with, internet access, print facilities
- Online classroom supports
- Web, text and e-mail alerts
- Expert and Industry links

DURATION

All our programmes are 1 year full-time, September to May. Normal post primary holidays apply. Some programmes are morning only.

ENNIS COLLEGE OF FURTHER EDUCATION

- 📍 Ennis Community College Campus, Harmony Row, Ennis, Co. Clare
- ☎ 065-6829432
- ✉ info@enniscc.ie
- 🌐 www.furthereducationennis.com

How To Apply

Applications will be taken online through the FETCH system www.fetchcourses.ie

Links can be accessed through www.furthereducationennis.com

Complete the online application form including an email address and we will contact you.

Interview

All applicants are called for interview. This is an opportunity to discuss your learning needs, the programme you are applying for and to address any queries you may have.

THE KEY QUESTION IS

"why have you applied for this course?"

It is useful to have some research done on the career/further education options for your chosen programme.

Interviews will be held in May. Places will be offered at that stage. Please allow time for your application to be processed.

Further interview will be held in late August and into September to fill any remaining places. Early application is advisable.

Garda Vetting

Learners may be Garda Vetted for work experience.

BUSINESS

ACCOUNTING

NURSING

CHILDCARE

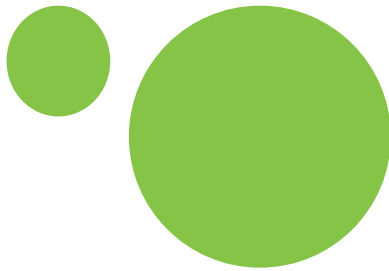
Business Studies

BUSINESS

ACCOUNTING

NURSING

CHILDCARE



AIM OF THE PROGRAMME

The programme provides experience in a range of business disciplines and comprehensive training in all office skills. This gives learners the confidence necessary to work in business while also pursuing further education and training. This programme provides learners with a number of access routes to 3rd level degree programmes.

TYPICAL CONTENT

Information & administration
Applied economics
Customer service
Word processing
Work experience
Mathematics
Accounting; Manual and computerised
Research and Study Skills
Safety and Health

DURATION

One year, full-time from September to May.

Classes are scheduled Monday to Friday, throughout the school day.

CERTIFICATION

QQI Level 5 Business Studies 5M2102

ENTRY REQUIREMENTS

Applicants must possess the Leaving Certificate/Leaving Cert Applied or equivalent. Applications from mature learners welcome.

Learners may be Garda Vetted for work experience.



I learned real hands on skills for business on the course and felt I could explore many careers such as marketing, law, accounting. I have started in first year of my Business degree and the PLC course gave me a head start.



WORK EXPERIENCE

Learners find placements in various offices for two weeks (60 hours) to gain practical experience in Business and to establish contact with prospective employers. Learners are encouraged to explore new experiences that support further study and career choices.

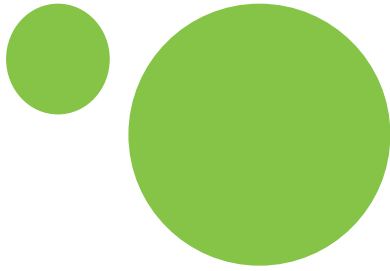
PROGRESSION/FURTHER EDUCATION:

Many graduates on this programme progress to degree courses in third level.

ECFE has a direct access agreement with LIT for their Ennis campus: Learners with a full level 5 qualification can gain direct entry to the LIT degree programmes offered at the Bindon Street campus.

A limited number of places are reserved on a competitive basis on ordinary degree and honours degree programmes in 3rd level colleges for learners who successfully complete a Level 5 Programme. Please refer to the current guide to the Higher Education Links Scheme on www.cao.ie

National Certificate In General Studies— University Access



TYPICAL CONTENT

Research & study skills
Mathematics
Work experience
Communications
Word processing
Safety & health
Applied Economics
Information & administration
Accounting manual and computerised



I had done my LC but wasn't too happy with the results and didn't get what I wanted to do in college. The school guidance counsellor advised me to check out this course. I am so glad I did. I am now studying for a Degree in UCC. I got great help from the team of tutors at ECFE that got me over the line.



AIM OF THE PROGRAMME

This programme gives learners the opportunity to build the knowledge, skills and competencies required for participation in higher education. Learners acquire a broad range of knowledge from various disciplines, and key skills for academic research and enquiry.

The programme is aimed at school leavers who are intent on accessing third level but are not a mature applicant (over 23 years) for CAO. Candidates may use this as a gap year while availing of the opportunity to develop research and study skills and discovering what avenue of further study they would like to undertake.

DURATION

One year full-time programme from September to May. Scheduled Monday to Friday, throughout the school day.

CERTIFICATION

QQI Level 5 General Studies 5M3114

ENTRY REQUIREMENTS

Applicants must possess the Leaving Certificate/Leaving Cert Applied or equivalent.

Learners may be Garda Vetted for work experience.

WORK EXPERIENCE

Learners source placements in various offices/businesses for two weeks (60 hours) to experience the world of work and to gain hands-on experience in a vocational field. Learners are encouraged to find experience in areas that may be of interest to them in their future careers and to explore different career options.

PROGRESSION/FURTHER EDUCATION:

A limited number of places are reserved on a competitive basis on ordinary degree and honours degree programmes in 3rd level colleges for learners who successfully complete a Level 5 Programme. Please check www.cao.ie.

Learners can access Guidance Counselling services and are encouraged to apply for the many (over 400 degrees) programmes including Arts/Humanities at 3rd level that allow access through this route.

Also, any student who graduates from ECFE with a full award, will have a right of entry to a degree programme offered by LIT at their Ennis campus (Bindon Street). LIT Ennis offer: BA (Honours) Early Childhood Education & Care, BA Social Care Work, and Bachelor of Business Marketing & Management.

Check our website for additional routes to 3rd level

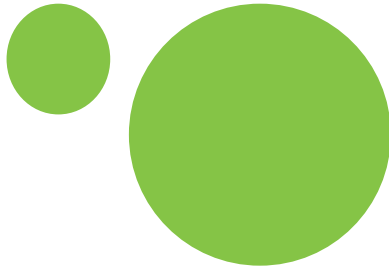
Office Administration / Medical Secretary

BUSINESS

ACCOUNTING

NURSING

CHILDCARE



AIM OF THE PROGRAMME

This programme will provide learners with the secretarial skills/ medical terminology required to perform tasks with a very high level of proficiency in a modern office environment or medical practice.

DURATION

One year full-time programme from September to May. Scheduled in the mornings, Monday to Friday.

CERTIFICATION

QQI Level 5 Office Administration 5M1997

ENTRY REQUIREMENTS

Applicants must possess the Leaving Certificate/Leaving Cert applied or equivalent. Alternatively, if you are over twenty-three years, you can apply to enrol as a mature learner on the basis of your age and life experience. Learners may be Garda Vetted for work experience.

WORK EXPERIENCE

Learners find placements in various offices for two weeks (60 hours) to gain office experience. This helps to establish contact with prospective employers locally.

CAREER OPPORTUNITIES

Many graduates go directly into employment in a range of offices, medical practices/hospitals, Auctioneers/Insurance Brokers/Solicitors/Accountants, local authorities, local businesses & industrial firms.

PROGRESSION/FURTHER EDUCATION

A limited number of places are reserved on a competitive basis on ordinary degree and honours degree courses in third level colleges for learners who successfully complete a Level 5 programme Please refer to the current guide to the Higher Education Links Scheme on www.cao.ie

TYPICAL CONTENT

Information & administration
Text production/touch typing
Word processing
Audio transcription
Communications
Medical terminology
Work experience
Accounting: manual and computerised
Payroll: manual and computerised



I needed training to return to employment and I found the Office Administration course at ECFE. I did work experience with an local Auctioneer's office and now I work there. We had a great team spirit in class that helped me get through.



Accounting Technician Certificate—Year 1



TYPICAL CONTENT

Participants will study the following subjects:

Financial accounting
Taxation
Business Management
Law & Ethics

FEES:

In addition to ECFE registration, learners are required to register with the Accounting Technicians Ireland.



I was glad I studied Accounting Technicians at ECFE because it gave me the structure I needed to get back to education and study. The tutors were very experienced and knew what they were preparing us for. I found that once I got through year 1, I knew how to study and get on with exams and that made it easier for year 2. I am hoping to go on the do a degree course.



AIM OF THE PROGRAMME

The aim is to prepare learners for the examinations for Accounting Technicians Ireland and qualification in this professional field.

Graduates are highly employable and sought after. They work with qualified accountants in business, industry, private practice and the public sector.

Qualified accounting technicians may continue their studies and may be eligible for various exemptions from professional exams.

DURATION

This is a one-year course. Timetabled in the mornings, Monday-Friday.

CERTIFICATION

Year 1 leads to an Accounting Technician Ireland Certificate.

ENTRY REQUIREMENTS

Applicants must possess the Leaving Certificate or equivalent. If you are over twenty-three, you can apply to enrol as a mature learner on the basis of age and experience. All learners are Garda Vetted.

CAREER OPPORTUNITIES

Many graduates of year 1 progress to year 2.

Successful completion of year 2 allows direct access to professional accounting degree programmes in the Institutes of Technology.

GMIT: BACHELOR OF BUSINESS (HONS) IN ACCOUNTING (GA181) 3 year degree—Accounting Technicians go direct to year 2.

LIT: Bachelor of Business (Honours) in Accounting & Finance Level 8 (LC224) 4 year degree programme—Accounting Technicians go direct to LIT year 3.

The professional bodies, including Chartered Accountants Ireland, the Association of Chartered Certified Accountants (ACCA), the Institute of Certified Public Accountants (CPA), or the CIMA (Chartered Institute of Management Accountants), offer graduates of Accounting Technicians Ireland significant exemptions for taking their exams.

Alternative, graduates of year 1 take up employment in a broad range of roles typically in office settings.

Check www.accountingtechniciansireland.ie for details.

Accounting Technician Certificate—Year 2

BUSINESS

ACCOUNTING

NURSING

CHILDCARE



TYPICAL CONTENT

Learners study the following modules in year 2:

- Advanced financial accounting
- Advanced taxation
- Management Accounting
- Integrated Accounting Systems (IAS):
 - Computerised Payroll
 - Computerised Accounts
 - Spreadsheets

FEES:

In addition to ECFE registration, learners are required to register with the Accounting Technicians Ireland.



I have completed my accounting technicians course and I have been working in an Accountants office for the past couple of months. I love the job and the hours really suite me. I would like to do further study in the future.



AIM OF THE PROGRAMME

The aim is to prepare the learner for the final exams for Accounting Technicians Ireland and qualification in this professional field.

The comprehensive training you receive means that you can play a wide range of roles in any organisation, such as assistant accountant, credit controller, payroll administrator and so on.

Qualified accounting technicians may continue their studies and may be eligible for various exemptions from professional exams.

In recent years, our learners have come in the top 5% in their final Accounting Technicians exams.

DURATION

This is a one-year course. Timetabled in the mornings, Monday-Friday.

CERTIFICATION

Year 2 leads to an Accounting Technician Ireland Diploma on the successful completion of work experience .

ENTRY REQUIREMENTS

Applicants must have passed year 1 Accounting Technicians.

All learners are Garda Vetted.

CAREER OPPORTUNITIES

Successful completion of year 2 allows direct access to professional accounting degree programmes in the Institutes of Technology.

GMIT: Bachelor Of Business (Hons) In Accounting (GA181) 3 year degree—Accounting Technicians go direct to year 2.

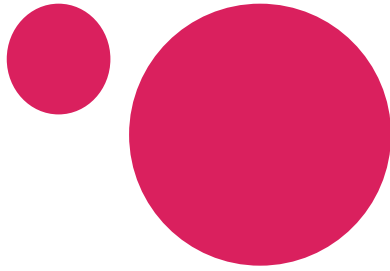
LIT: Bachelor of Business (Honours) in Accounting & Finance Level 8 (LC224) 4 year degree programme—Accounting Technicians go direct to LIT year 3.

The Chartered Accountants Ireland, Association of Chartered Certified Accountants (ACCA), the Institute of Certified Public Accountants (CPA), or the CIMA (Chartered Institute of Management Accountants) offer graduates of Accounting Technicians Ireland exemptions for their exams.

Alternative, graduates of year 2 take up employment in a broad range of finance roles in many types of organisations across different sectors, from private industry to local and central government.

Check www.accountingtechniciansireland.ie for details.

Nursing Studies



TYPICAL CONTENT

Anatomy & physiology
Nursing theory and practice
Safety and health at work
Care skills
Care of the older person
Customer service
Work experience
Word processing
Human growth & development



Doing the PLC Nursing Studies course paid off. I have received a place for General Nursing in GMIT in Mayo and I am over the moon. I am thrilled. Thank you for all your help throughout the year. I thoroughly enjoyed the programme.



AIM OF THE PROGRAMME

This programme is aimed at learners who wish to pursue a career in Nursing in Ireland or in the UK or to work as Health Care worker or as a Nursing Assistant in hospitals and in the community. Learners can apply for 3rd level nursing degrees in Ireland and the UK.

DURATION

One year, full-time, Sep to May, Mon-Fri throughout the college day.

CERTIFICATION

QQI Level 5 Nursing Studies 5M4349

ENTRY REQUIREMENTS

Applicants must possess the Leaving Certificate/Leaving Cert Applied or equivalent. Alternatively, if you are over twenty-three years, you can apply to enrol as a mature learner on the basis of age and life experience. Learners may be Garda Vetted for work experience.

ADDITIONAL CERTIFICATION

First Aid and Patient & Manual Handling offered at an additional cost.

WORK EXPERIENCE

The work experience requirement for this programme is a minimum of 120 hours. Some work experience may be completed over weekend/holiday periods. This work experience may be in a hospital or nursing home.

PROGRESSION/FURTHER EDUCATION

A limited number of places are reserved, on a competitive basis, on degree programmes in third level colleges for learners who complete a Level 5 programme. Please refer to the current guide to the Higher Education Links Scheme on www.cao.ie.

UCAS: Many graduates also apply to colleges in the UK and Northern Ireland through www.ucas.com. Ennis College of Further Education has established links with Bucks New University, London and University of Southampton to assist with UCAS applications to Nursing Degree programmes.

Community Health Services

BUSINESS

ACCOUNTING

NURSING

CHILDCARE



TYPICAL CONTENT

Nursing theory and practice
Human growth & development
Nutrition
Care skills
Care of the older person
Work experience
Safety & health at work
Customer service
Word processing



I really wanted to work in health care but I didn't have qualifications. I joined the Community Health class in ECFE and I am now a care worker with a local agency. I can set my own hours and I enjoy the job.



AIM OF THE PROGRAMME

This course is designed to prepare applicants for work in the area of community care, working as a care assistant in a hospital or health care establishment, caring for the elderly and persons with special needs. Recent changes in the health sector have created employment opportunities for those with updated skills and knowledge.

DURATION

One year full-time programme from September to May. Classes are timetabled Monday to Friday throughout the school day.

CERTIFICATION

Level 5 Community Health Services 5M4468

Optional: First Aid, Patient and Manual Handling

ENTRY REQUIREMENTS

Applicants must possess the Leaving Certificate/Leaving Cert Applied or equivalent. Alternatively, if you are over twenty-three years, you can apply to enrol as a mature learner on the basis of age and your experience. Learners may be Garda Vetted for work experience.

WORK EXPERIENCE

The work experience requirement for this programme is a minimum of 120 hours. Some work experience may have to be completed over weekend/holiday periods. This work experience should be in a hospital or nursing home.

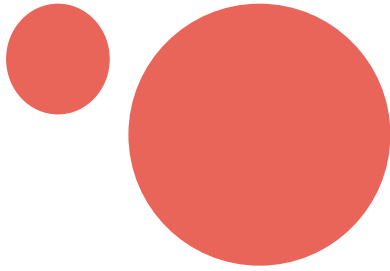
CAREER OPPORTUNITIES

Direct Entry into employment in the caring profession as a nurses aide, care assistant or special care assistant.

PROGRESSION/FURTHER EDUCATION:

A limited number of places are reserved on a competitive basis on ordinary degree and honours degree courses in third level colleges for students who successfully complete a Level 5 Course. Please refer to the current guide to the Higher Education Links Scheme on www.cao.ie

Early Childhood Care And Education Level 5 With Special Needs Assisting (SNA)



TYPICAL CONTENT

Child development
Child health and well-being
Work experience
Customer service
Special needs assisting
Early care & education practice
Early childhood ed. & play
Creative arts for childhood



I am working in a crèche as a Childcare assistant and I love my job. I have experience with babies to pre-school children. The course at ECFE was essential for getting the job. The course was very professional and practical and we had a great class.



AIM OF THE PROGRAMME

This is a one year Childcare Course designed to equip candidates to work as members of a professional team in the area of childcare.

Graduates are also qualified to seek employment as SNAs and Classroom Assistants in Primary and Secondary Schools.

From December 2016 all staff in early years services need a full Level 5 Childcare qualification, & Preschool (ECCE) Room Leaders need a Level 6 qualification.

DURATION

One year full-time course, September to mid-May, Mo-Fri mornings.

CERTIFICATION

QQI Level 5 Early Childhood Care and Education 5M2009.

ENTRY REQUIREMENTS

Applicants must possess the Leaving Certificate/Leaving Cert Applied or equivalent. Alternatively, if you are over twenty-three years, you can apply to enrol as a mature learner on the basis of age and life experience. Learners may be Garda Vetted for work experience.

ADDITIONAL CERTIFICATION

First Aid and Patient & Manual Handling offered at an additional cost.

WORK EXPERIENCE

The work experience requirement for this programme is a minimum of 120 hours in a registered childcare setting.

CAREER OPPORTUNITIES

This qualification will enable students to work in a variety of childcare settings including pre-schools, crèches, nurseries, classroom assistants, and SNAs/special needs assistants.

PROGRESSION/FURTHER EDUCATION:

Many of our learners progress onto the advanced Certificate in Early Childhood Care and Education Programme 6M2007 at ECFE.

Also, a limited number of places are reserved on a competitive basis on ordinary degree and honours degree courses in third level colleges for students who successfully complete a Level 5 Course. Please refer to www.cao.ie

LIT: The Certificate in Early Childhood Care and Education 5M2009 gives direct access to a BA in Early Childhood Education & Care (Ennis Campus).

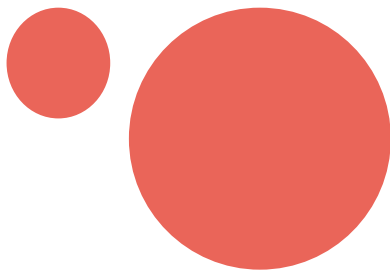
Early Childhood Care And Education Level 6

BUSINESS

ACCOUNTING

NURSING

CHILDCARE



TYPICAL CONTENT

Child Development
Communications
Work Experience
Word Processing (level 5)
Early Childhood Curriculum
Childhood Social, Legal and Health Studies
Supervision in Early Childhood
Equality and Diversity in Childcare



I stayed on after completing the level 5 and did the level 6 course. I am working as a room leader in a crèche and I can really see what I learned on the programme being put into action. We had a small, close knit group in ECCE that helped get me through the course.



AIM OF THE PROGRAMME

The purpose of this award is to enable the learner to acquire the knowledge, skill and competence to work as an autonomous childcare practitioner and or take responsibility for the work of others in leading and coordinating the provision of a quality early childhood care and education environment which helps to promote children's well-being, development and learning.

This award will provide learners with opportunities to transfer and progress to programmes leading to higher education and training awards.

From December 2016 all staff in early years services need a full Level 5 Childcare qualification, and all Preschool (ECCE) Room Leaders need a full Level 6 Childcare qualification.

DURATION

One year full-time course, September to mid-May, Mo-Fri mornings.

CERTIFICATION

QQI Level 6 Early Childhood Care and Education 6M2007

ENTRY REQUIREMENTS

Applicants must have completed the level 5 Childcare or equivalent. Learners may be Garda Vetted for work experience.

ADDITIONAL CERTIFICATION

Learners are offered First Aid and Patient & Manual Handling at an additional cost.

WORK EXPERIENCE

The work experience requirement for this programme is a minimum of 120 hours in a registered childcare setting.

PROGRESSION/FURTHER EDUCATION

A limited number of places are reserved, on a competitive basis, on ordinary degree and honours degree programmes in 3rd level colleges for learners who successfully complete a level 5 Programme. Please refer to the current guide to the Higher Education Links Scheme on www.fetac.ie and www.cao.ie

LIT: The advanced Certificate in Early Childhood Care and Education 6M2007 learner can progress to YEAR 2 of LIT (Ennis campus) BA degree in Early Childhood Education and Care.

GMIT:

The advanced Certificate in Early Childhood Care and Education 6M2007 gives direct access to year 2 of the BA degree in Early Childhood Education and Care (Mayo Campus).

Fees

€20 application – no exemptions

€150 registration – no exemptions

€200 – Exemptions as outlined in circular letter 0013/2011 – Full medical card holders in their own right and dependent children; Students on grant scheme; Back to Education Allowance (BTEA)

QQI Exam Fees: Level 5 = €50, Level 6 = €80, waivers for Medical Card holders and BTEA.

Some modules will require the purchase of a text book or materials.

Accounting Technicians Ireland attract additional costs. Please visit www.accountingtechniciansireland.ie

First Aid, Patient and Manual Handling training incur additional fees.

GRANTS: Learners may apply for a means tested maintenance grant through www.susi.ie.

BACK TO EDUCATION ALLOWANCE : Social Welfare recipients should contact the Department of Family and Social Affairs, Ennis, Co. Clare. If you are on a social welfare payment, please

contact the department before you apply for a programme and check how your payment may change.

NATIONAL CHILDCARE SCHEME: Learners should check with their childcare provider or the Clare County Childcare Committee, Kilrush Road, Ennis for funding. Also check the www.ncs.gov.ie

ADDITIONAL NEEDS: ECFE welcomes all learners with additional needs. Learners are asked to inform the college of any additional needs at interview so that the college can plan for supports. Every effort is made to facilitate learners.

The college is wheelchair accessible.

NON-EU NATIONAL APPLICANTS: Non EU-applicants should see www.inis.gov.ie for additional entry requirements.

Eligible international protection applicants are subject to the full international fee. For PLC the fee is €3,653. Applicants are exempt from the international tuition fee if they possess a Stamp 4.

Progression

Ennis College of Further Education supports all learners that wish to progress to further and higher education.

CAO: A limited number of places are reserved on a competitive basis on degree programmes in 3rd level colleges for learners who complete a level 5/6 Programme. Some courses require a specific major award and/or a specific grade in specific components. Please refer to the current guide to the Higher Education Links Scheme on www.cao.ie. (Student RESOURCES, and QQI-FET Information).

MATURE APPLICANTS: Normally mature applicants should be 23 years old on or before 1st January in the year of application, for admission in Autumn of that year. Generally, mature applicants must apply to the CAO by the 1st February. Learners should consult the Admissions Office or Mature Students Officer of

the appropriate Higher Education Institutes (HEI) / colleges well in advance of application closing dates.

UCAS: The college has established links with Bucks New University, London and University of Southampton to assist with applications to UCAS Nursing Degree programmes. Learners are advised to check out their websites: www.bucks.ac.uk and www.southampton.ac.uk.

GUIDANCE: ECFE Learners are supported in groups and individually by the Guidance Counsellor. Learners are encouraged to avail of information seminars and to start researching colleges and courses early in the academic year. The various Higher Education Institutes (HEI) / colleges will hold open days and information sessions particularly for adult learners. ECFE will endeavour to notify learners of upcoming events.

FETCH: Learners will find other further education and training options through the FETCHcourses.ie website

DIRECT ACCESS TO DEGREE PROGRAMMES

Direct Access = Access to Degree Programmes without Points

LIT: Any student who graduates from ECFE with a full award, will have a right of entry to the degree programme offered by LIT Ennis campus (Bindon Street). @Ennis Education Quarter.

Check out their courses on www.lit.ie and apply through the CAO www.cao.ie

BA (Hons) in Social Care Work LC612

BA in Social Care Work LC602

BA (Hons) in Early Childhood Education and Care LC613

BA in Early Childhood Education and Care LC603

BBs (Honours) in Business LC615

BBs in Business LC606

BSc (Honours) in Creative Media and Design LC616

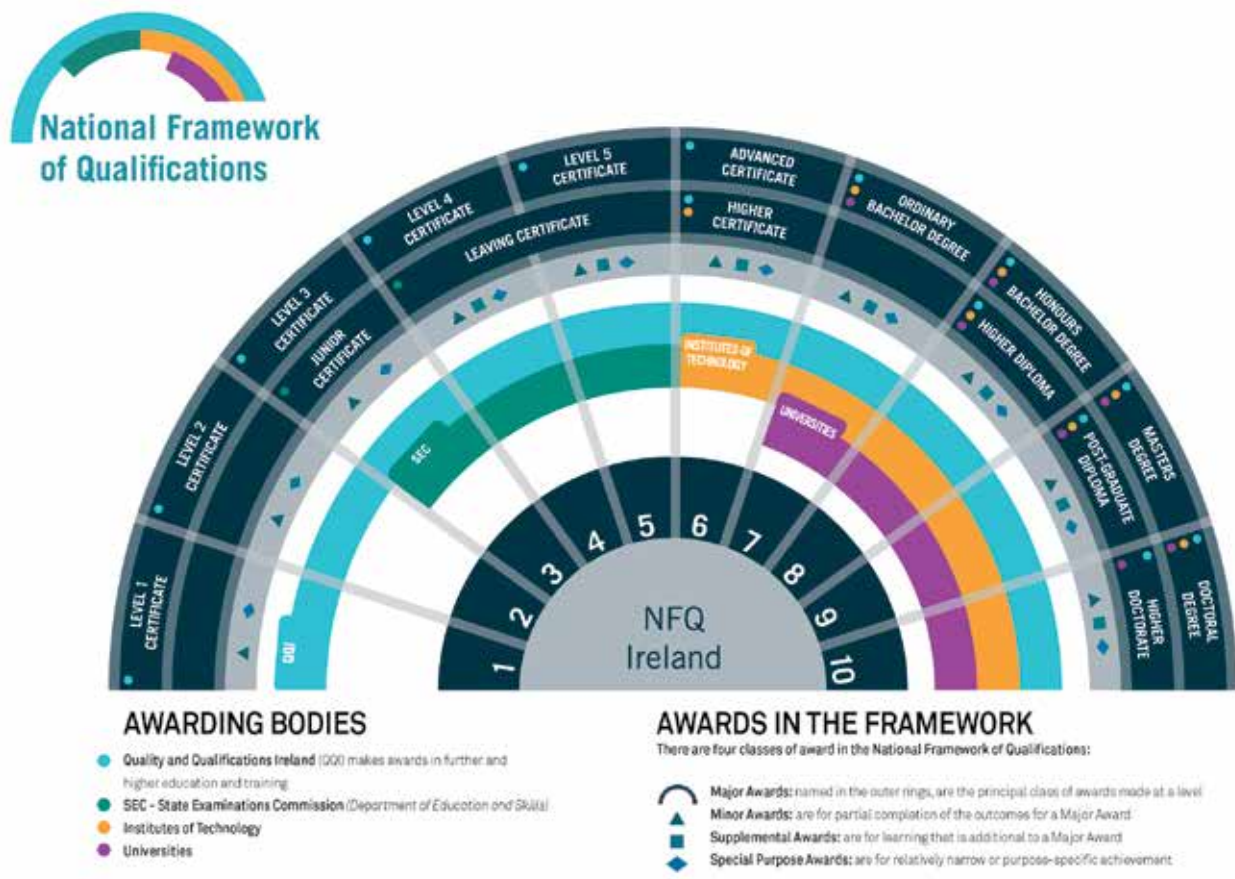
BSc in Creative Media and Design LC 606

Early Childhood Care and Education 6M2007 gives direct access to year 2 of the BA Degree in Early Childhood Education and Care in LIT (Ennis Campus) and GMIT (Mayo Campus). Contact the admissions office to apply directly.

Accounting Technicians—completion of year 2 gives direct access to:

LIT: Bachelor of Business (Hons) Accounting & Finance, Level 8 (LC224) 4 year degree – Accounting Technicians go direct to LIT year 3. Contact the admissions office.

GMIT: Bachelor of Business (Hons) In Accounting, Level 8 (GA181) 3 year degree –Accounting Technicians go direct to year 2. Contact the admissions office.



For further information consult: www.nfq.ie www.QQI.ie

©QQI 2014

New Progression Links

Any student who graduates from Ennis College of Further Education with a full award, will have a right of entry to a degree programme offered by LIT at their newly established Ennis campus (Bindon Street)

@Ennis Education Quarter

LIT (Ennis) offer ordinary and honours degree programmes in the following:

- BA Early Childhood Education & Care
- BA Social Care Work
- Bachelor of Business Marketing & Management

Application through the CAO

ENNIS COLLEGE OF FURTHER EDUCATION

📍 Ennis Community College Campus,
Harmony Row, Ennis, Co. Clare
☎ 065-6829432
✉ info@enniscc.ie
🌐 www.furthereducationennis.com



European Union
Investing in Your Future
European Social Fund



Ireland's European Structural and
Investment Funds Programmes
2014-2020
Co-funded by the Irish Government
and the European Union



Accounting
Technicians
Ireland



Bord Oideachais & Ollúna
LUMINIGH & AN CHLÁIR
LIMERICK & CLARE
Education & Training Board



Rialtas na hÉireann
Government of Ireland



QQI
Quality and Qualifications Ireland
Dearbhó Cáilíochta agus Cáilíochtaí Éireann

This provision is co-funded by the Government of Ireland and the European Social Fund as part of the ESF Programme for Employability, Inclusion and Learning 2014-2020

Apply Online @ www.furthereducationennis.com